



**shadow**spec  
umbrellas with distinction



# SHADOWSPEC UNITY™

The Evolution of Shade



**Fabric  
Warranty\***  
BEST-IN-CLASS



**Frame  
Warranty\***  
BEST-IN-CLASS



Trusted for  
over 25 years



Hand built in  
New Zealand



Marine  
Grade

## Patented & Trademarked Technology



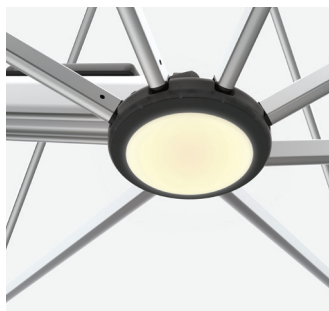
### SHADOWLIFT™

Gas-assisted deployment for an easy lift.



### SHADOWGLIDE™

Engineered to open or close in 5 seconds.



### SHADOWHUB™

LED light technology built-in and App controlled.



### SHADOWLOCK™

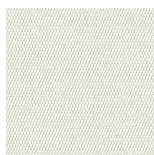
Integrated security and wind-protection.

## Canopy

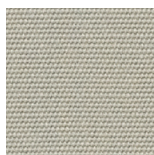


**Fabric Warranty\***  
BEST-IN-CLASS

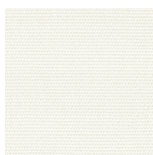
### Stock Colours



Oyster



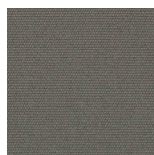
Alpine Stone



Natural



Storm



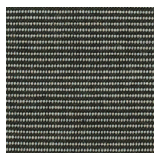
Charcoal



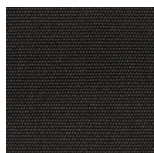
Slate



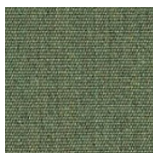
Taupe



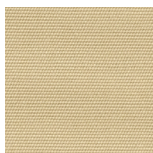
Charcoal Tweed



Black



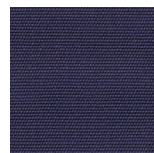
Fern



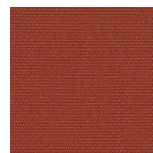
Linen



Sunflower Yellow



Captain Navy



Terracotta

### Special-Order Colours\*\*

**RECASENS**  
BCN 1886

**sunbrella®**

\*\*Special-Order Colours are non-stock and will incur an additional lead time and surcharge. Full Sunbrella range is available as a custom colour option.



Marine Grade



Solution-dyed, High Colour Fastness



UV and Fade Resistant



UPF 80 UV Protection



Eco-friendly Production



Breathable Weave



Mould and Mildew Resistant



Oil and Stain Repellent



Easy Clean



Water Resistant



Chlorine Resistant

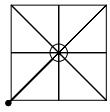


Tear Resistant

# Size & Configuration

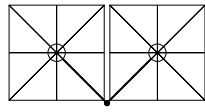
## SQUARE UNO

2.5m | 8' or 3.0m | 10'



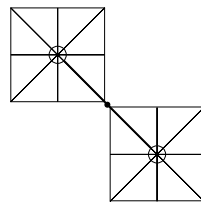
## SQUARE DUO

5.0m | 16' or 6.0m | 20'



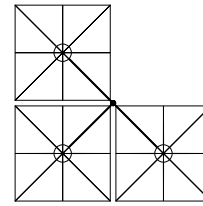
## SQUARE DUO

5.0m | 16' or 6.0m | 20'



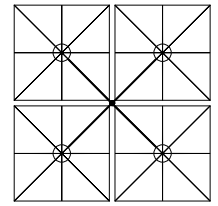
## SQUARE TRIO

5.0m | 16' or 6.0m | 20'



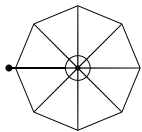
## SQUARE QUATTRO

5.0m | 16' or 6.0m | 20'



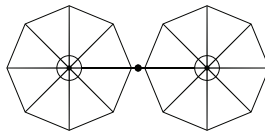
## OCTAGON UNO

3.5m | 11' or 4.0m | 13'



## OCTAGON DUO

7.0m | 22' or 8.0m | 26'



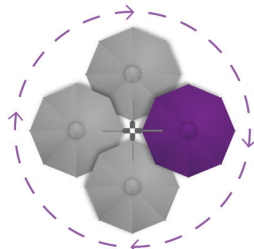
All sizings and conversions are approximate and subject to change without notice. Refer to specsheets for exact, up-to-date measurements.

## Features



### MARINE GRADE

No-rust, 316 Stainless Steel Spigot.



### FOLLOW THE SUN

Enjoy the 360° rotation for all-day-shade.

## Optional Accessories



### LED LIGHT CONTROL

Power your light with the optional Smart Battery or Hardwire Kit.



### PROTECTION COVER

Optional care and protection for your umbrella.

## Mounting Options

### SURFACE PLATE

For deck, patio and concrete mounting. (316 Stainless Steel)



### IN-GROUND ANCHOR

For mounting with a concrete footing.



### WALL MOUNT BRACKET

For when ground mounting isn't possible. (316 Stainless Steel)



### FREE-STANDING BASE + ALUMINIUM BASE COVER

For complete customised manoeuvrability.



Optional Castor Wheels shown. Note - Concrete Pavers are required for ballast (not supplied).

# Umbrella Dimensions

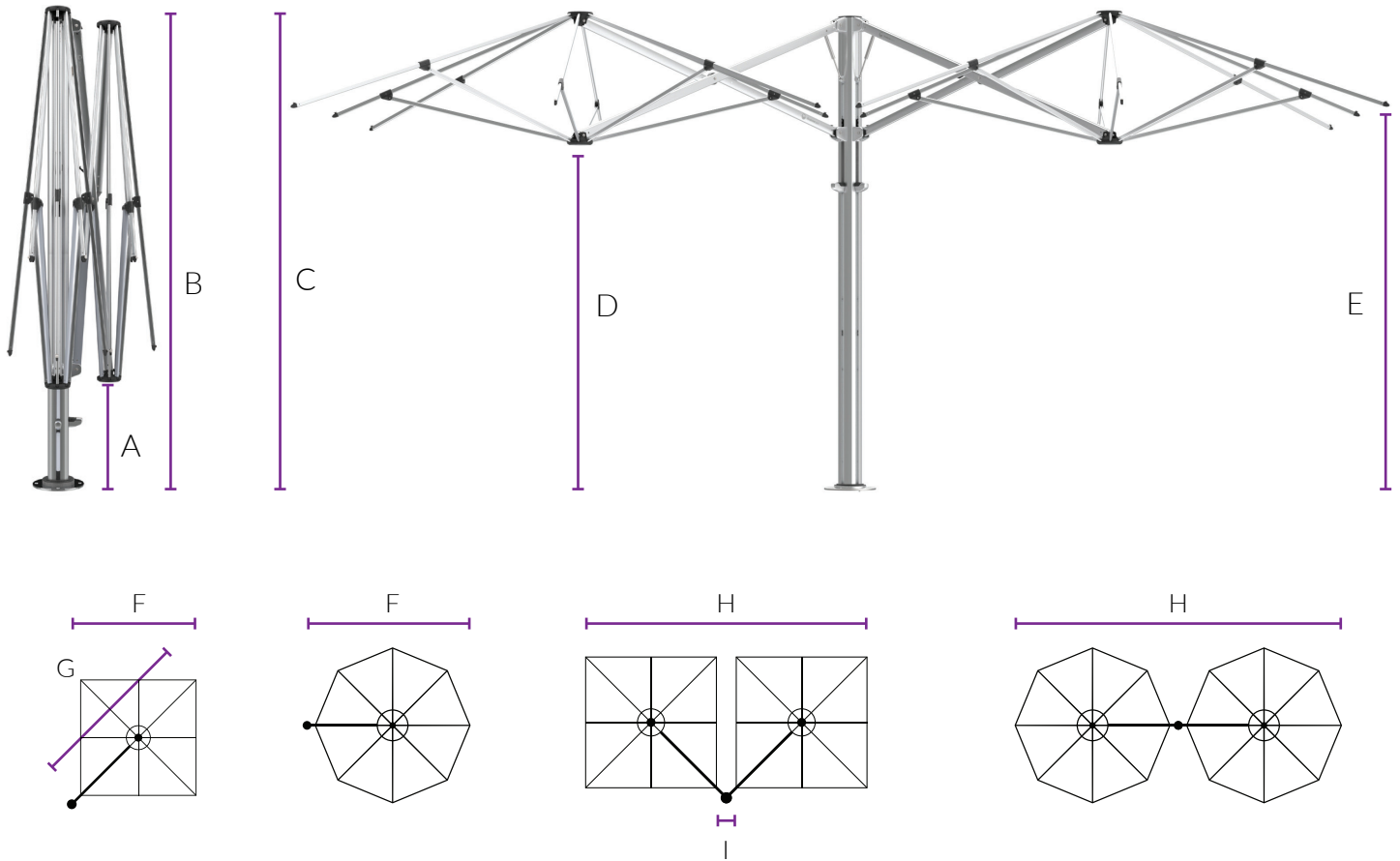


Diagram Legend	2.5m	8'	3.0m	10'	3.5m	11'	4.0m	13'
<b>A</b> Ground to central frame hub when closed***	860mm	2'10"	620mm	2'1"	1079mm	3'7"	866mm	2'10"
<b>B</b> Total height to top of canopy***	2900mm	9'6"	2824mm	9'3"	2975mm	9'9"	2899mm	9'6"
<b>C</b> Height of umbrella to top of mast cap***	2908mm	9'6"	2908mm	9'6"	2908mm	9'7"	2908mm	9'6"
<b>D</b> Ground to central frame hub when open***	2130mm	7'0"	2054mm	6'9"	2205mm	7'3"	2128mm	7'0"
<b>E</b> Ground to lower outer edge of canopy***	2222mm	7'3"	2219mm	7'3"	2237mm	7'4"	2172mm	7'2"
<b>F</b> Centre of Spigot to outside edge of canopy	2646mm	8'8"	2973mm	9'10"	3447mm	11'4"	3923mm	12'10"
<b>G</b> Diagonal from centre of mast to corner	3742mm	12'3"	4205mm	13'10"	N/A	N/A	N/A	N/A
<b>H</b> Duo/Quattro umbrella width edge to edge	5292mm	17'4"	5946mm	19'6"	6894mm	22'7"	7846mm	25'9"
<b>I</b> Gutter space between canopies	160mm	6"	160mm	6"	N/A	N/A	N/A	N/A

\*\*\*Free-Standing Base installations will add 165mm | 6" to the height and surface plates will add 12mm | ½" to the height. Adding Free-Standing Base wheels will add a further 45-80mm | 2-3" to the height. All sizings and conversions are approximate and subject to change without notice. Refer to specsheets for exact, up-to-date measurements.



**Contact us for information and advice**

07 3170 6218

[vcustomblinds.com.au](http://vcustomblinds.com.au)



**shadow spec**

umbrellas with distinction